



**SASKATCHEWAN  
COLLEGE OF  
PARAMEDICS**

## SCoP Membership Profile

---

---

---

---

---

---

---

---

### Type of Membership by Classification, Feb. 1, 2011

Type of Membership by Classification, February 1, 2011					
	EMR	EMT	EMT -A	EMT - P	Total
Non-practicing	11	46	7	4	68
Practicing	319	1068	218	211	1816
<b>Grand Total</b>	<b>330</b>	<b>1114</b>	<b>225</b>	<b>215</b>	<b>1884</b>

---

---

---

---

---

---

---

---

### Registration Cycle

Yearly Registration Comparison			
	February 2009	February 2010	February 2011
EMR	319	312	330
EMT	1077	1086	1114
EMT - A	206	218	225
EMT - P	188	206	215
<b>Total</b>	<b>1790</b>	<b>1822</b>	<b>1884</b>

---

---

---

---

---

---

---

---

### Impact of Labour Mobility

SCoP Members' Province of Residence		
	February 2010	February 2011
Alberta	18	22
British Columbia	2	1
Manitoba	3	12
NWT		3
Ontario	3	4
Saskatchewan	1796	1842
<b>Total</b>	<b>1822</b>	<b>1884</b>

---

---

---

---

---

---

---

---

---

---

### Classification by Gender

Classification by Gender, February 1, 2011			
	Female	Male	Total
EMR	165	165	330
EMT	336	778	1114
EMT – A	98	127	225
EMT – P	56	159	215
<b>Total</b>	<b>655</b>	<b>1229</b>	<b>1884</b>

---

---

---

---

---

---

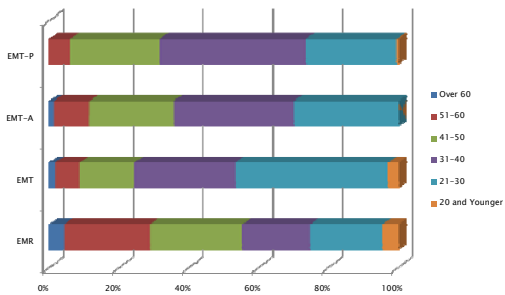
---

---

---

---

### Age of Members by Classification




---

---

---

---

---

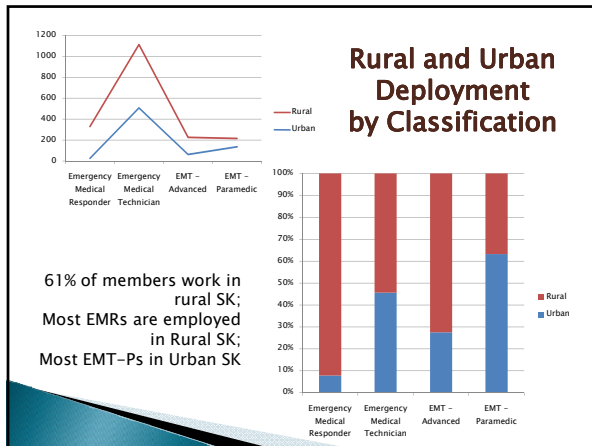
---

---

---

---

---




---

---

---

---

---

---

---

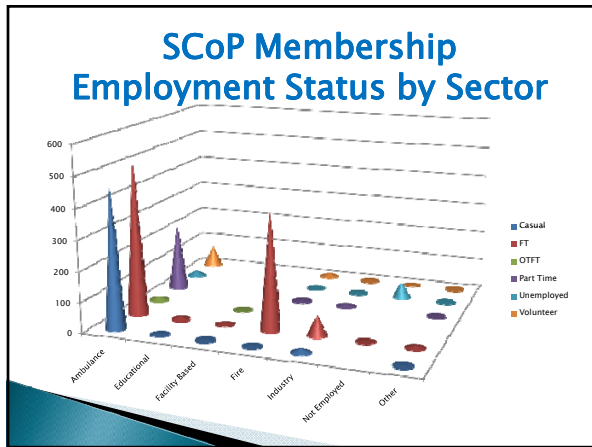
---

---

---

---

---




---

---

---

---

---

---

---

---

---

---

---

---

### Communication with our Members

	EMR	EMT	EMT-A	EMT-P	Total
Email Addresses Given	251	973	215	208	1647
Total Members	330	1114	225	215	1884

Almost 90% of members provided email addresses

---

---

---

---

---

---

---

---

---

---

---

---